

HOLLIS TAGGART

DALLAS ART FAIR 2024

Booth G4

April 4–7, 2024

1



Pablo Atchugarry (b. 1954)

Untitled, 2023

Carrara marble

20 x 8 x 4 1/2 in. (50.8 x 20.3 x 11.4 cm)

22 3/8 x 10 3/4 x 7 1/4 in. (56.8 x 27.3 x

18.4 cm) (with base)

(HTG19225)

2



William Baziotes (1912-1963)

Mirage, circa 1950

Signed upper right: "Baziotes"

Pastel and graphite on paper

37 x 24 in. (94 x 61 cm)

(HTG19405)

3



Janice Biala (1903-2000)

Bullfight, 1956

Signed lower right: "Biala"

Titled and dated verso

Oil and collage on canvas

24 x 36 in. (61 x 91.4 cm)

(HTG18998)

HOLLIS TAGGART

4



James Brooks (1906-1992)

Ludlow, 1956

Signed lower right

Signed, dated, and titled verso

Oil on canvas

51 x 47 1/2 in. (129.5 x 120.7 cm)

(HTG19404)

5



Alexander Calder (1898-1976)

Gull, 1965

Signed and dated lower right "Calder / 65"

Inscribed on verso: "434 / Gull / 37086"

Gouache and ink on paper

29 1/2 x 42 1/2 in. (74.9 x 108 cm)

(HTG19257)

6



Norman Carton (1908-1980)

Winter Overture #738, 1955

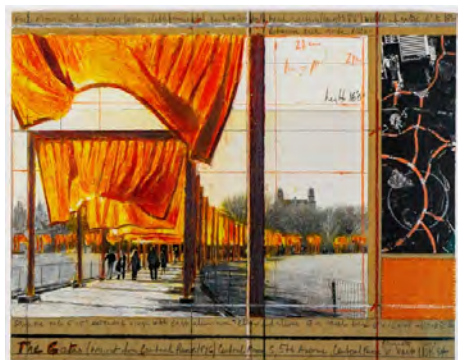
Signed lower right: "Carton"

Oil on canvas

25 3/4 x 32 in. (65.4 x 81.3 cm)

(HTG17680)

7



Christo and Jeanne-Claude

The Gates Drawing, 2003

Signed and dated verso: "© Christo 2003"

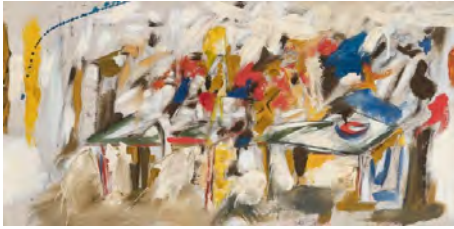
Mixed media and fabric collage on board

11 x 14 in. (27.9 x 35.6 cm)

(HTG19351)

HOLLIS TAGGART

8



Michael Goldberg (1924-2007)

The Last Supper, circa 1950s

Signed lower right: "Goldberg"

Oil on canvas

15 x 30 in. (38.1 x 76.2 cm)

(HTG18832)

9



Michael Goldberg (1924-2007)

Untitled, 1959

Signed upper left: "Goldberg"

Oil on card mounted to canvas

11 x 14 in. (27.9 x 35.6 cm)

(HTG18788)

10



Keith Haring (1958-1990)

Untitled, 1984

Signed and dated verso: "K. Haring Jan. 14-1984"

Sumi ink on paper

50 x 38 in. (127 x 96.5 cm)

(HTG19300)

11



Albert Kotin (1907-1980)

#5, 1963

Signed lower right: "Kotin"

Signed verso: "Albert"

Oil on canvas

36 x 30 in. (91.4 x 76.2 cm)

(HTG18170)

HOLLIS TAGGART

12



Albert Kotin (1907-1980)
Calliope I, 1953
Signed lower right: "Kotiin"
Signed verso: "Albert Kotin"
Signed and inscribed on stretcher verso:
"A. Kotin 90 E. 10th St. NY"
Oil on canvas
36 x 30 in (91.4 x 76.2 cm)
(HTG17273)

13



Albert Kotin (1907-1980)
Struggle Between Insects and Plants, 1948
Signed lower left: "Kotin"
Titled, signed, and dated on stretcher
verso: "STRUGGLE BETWEEN / INSECTS
AND PLANTS / Kotin / 1948"
Oil on canvas
36 x 30 in (91.4 x 76.2 cm)
(HTG17262)

14



Albert Kotin (1907-1980)
Untitled, circa 1948
Estate stamp verso
Oil on paper mounted on canvas
22 x 14 in (55.9 x 35.6 cm)
(HTG17266)

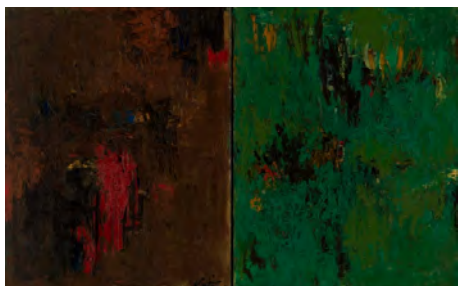
HOLLIS TAGGART

15



Albert Kotin (1907-1980)
Untitled, circa 1950
Signed lower left: "Kotin"
Oil and enamel on canvas
36 x 30 in (91.4 x 76.2 cm)
(HTG17268)

16



Albert Kotin (1907-1980)
Untitled, circa 1961
Signed lower right (left panel): "Kotin"
Signed verso (each panel): "Kotin"
Oil on canvas
20 x 32 in (50.8 x 81.3 cm) (diptych)
(HTG17291)

17



Yayoi Kusama (b. 1929)
High-Heels With Bow (Silver), 2013
Numbered, signed, and dated on bottom
of each shoe
Porcelain
Left shoe: 5 3/4 x 4 x 8 3/4 in. (14.6 x 10.3
x 22.3 cm)
Right shoe: 6 5/8 x 2 7/8 x 8 3/4 in. (16.8 x
7.3 x 22.2 cm)
Edition 1 of 30
(HTG19373)

HOLLIS TAGGART

18



Chloë Lamb (b. 1960)
A Couple for the Courtyard, 2022
Oil on linen canvas
40 x 35 in. (101.6 x 88.9 cm)
(HTG18130)

19



Chloë Lamb (b. 1960)
Above and Beyond, 2023
Oil on linen canvas
40 x 35 in. (101.6 x 88.9 cm)
(HTG18953)

20



Chloë Lamb (b. 1960)
Garden Table, 2022
Oil on linen canvas
26 x 30 in. (66 x 76.2 cm)
(HTG18128)

HOLLIS TAGGART

21



Chloë Lamb (b. 1960)
Let's Go on the Ferry, 2022
Oil on linen canvas
30 x 26 in. (76.2 x 66 cm)
(HTG18132)

22



Chloë Lamb (b. 1960)
Magic Garden, 2022
Oil on linen canvas
40 x 50 in. (101.6 x 127 cm)
(HTG18131)

23



Chloë Lamb (b. 1960)
Tangle, 2023
Oil on linen canvas
50 x 50 in. (127 x 127 cm)
(HTG18952)

HOLLIS TAGGART

24



Alfred Leslie (1927-2023)

NUMBER 5, 1960

Signed and dated lower left: "Leslie 60"
Oil on canvas with collaged paper and staples

20 x 30 in. (50.8 x 76.2 cm)

(HTG19269)

25



Sol LeWitt (1928-2007)

Irregular Wavy Horizontal Color Bands, 1992

Signed and dated lower right: "S. LeWitt 1992"

Gouache on paper

22 x 29 1/2 in. (55.9 x 74.9 cm)

(HTG19348)

26



Sol LeWitt 1928-2007

Red and Green Composition, 2002

Signed and dated lower right: "S LeWitt 02"

Gouache on paper

11 x 29 7/8 in. (27.9 x 75.9 cm)

(HTG19264)

27



Sol LeWitt (1928-2007)

Squiggly Brushstrokes, 1997

Signed and dated lower right: "S. LeWitt 97"

Gouache on paper

30 x 22 3/4 in. (76.2 x 57.8 cm)

(HTG19349)

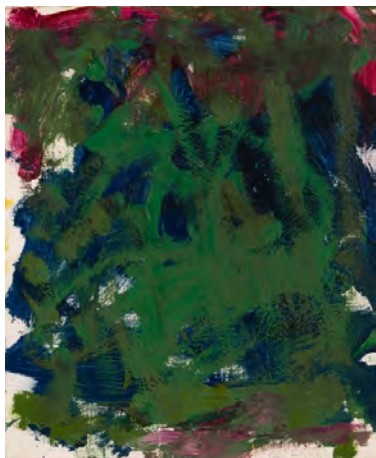
HOLLIS TAGGART

28



Mercedes Matter (1913-2001)
Tabletop Still Life, 1936–37
Estate stamp verso
Oil on paper laid on canvas
20 x 24 in. (50.8 x 61 cm)
(HTG19019)

29



Joan Mitchell (1925-1992)
Untitled, 1981–82
Signed lower right: "Joan Mitchell"
Inscribed on stretcher verso: "Jean
Lamouroux"
Oil on canvas
18 x 14 3/4 in. (45.7 x 37.5 cm)
(HTG17767)

30



Larry Poons (b. 1937)
Untitled, 1972
Signed and dated verso: "Larry / Poons /
1972"
Acrylic on paper
15 1/4 x 23 1/2 in. (38.7 x 59.7 cm)
(HTG17239)

31



Ed Ruscha (b. 1937)
Averages, 1987
Signed twice, titled, and dated twice
verso: "AVERAGES ED RUSCHA 1987"
Acrylic on canvas
32 x 120 in. (81.3 x 304.8 cm)
(HTG19272)

HOLLIS TAGGART

32



Sean Scully (b. 1945)

Untitled, 1989

Signed and dated lower right: "Sean Scully
5.20.89"

Pastel on paper

22 3/8 x 30 1/8 in. (56.8 x 76.5 cm)
(HTG19350)

33



Michael (Corinne) West (1908-1991)

Dagger of Light, 1951

Initialed and dated lower right: "M.W. /
1951"

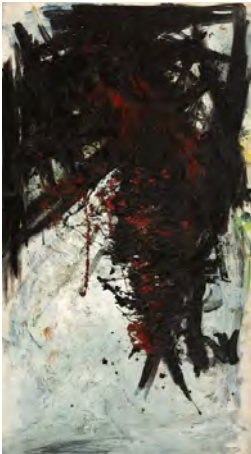
Titled and signed verso: "Dagger of Light
Michael West"

Oil, aluminium paint, and sand on canvas
55 x 35 inches (139.7 x 88.9 cm)

* Work can be hung horizontally or
vertically

(HTG18861)

34



Michael (Corinne) West (1908-1991)

Study, 1957

Signed (twice), inscribed, titled, and dated
verso: "Mich West / Repaint/Study / Mich
West /1957"

Oil on canvas

69 1/2 x 38 3/8 in. (176.5 x 97.5 cm)
(HTG18791)

HOLLIS TAGGART

35



Michael (Corinne) West (1908-1991)

Untitled, circa early 1970s

Oil on canvas

57 1/8 x 47 3/8 in. (145.1 x 120.3 cm)

(HTG15491)